

GENERAL CONDITIONS OF THE HORIZONTAL LIFELINE AE 320 UTILIZATION

- 1 **IDENTITY CARD** - should be filled in by a competent person and kept during whole period of the horizontal lifeline using.
- 2 **FIRST USE** - fill in the Identity Card.
- 3 **PERIOD INSPECTIONS** - annual inspection must be done by a competent person. Whole parts of the horizontal lifeline AE 320: the webbing tensioner, connectors, webbings, sewings, must be controlled in respect of mechanical, chemical and thermal defects. The result of inspection must be recorded in Identity Card.
- 4 **OUT OF SERVICE** - the horizontal lifeline AE 320 must be out of service and destroyed after being used to arrest a fall. The horizontal lifeline AE 320 must be out of service and sent to manufacturer or their representation when any defects will appear during annual or everyday use inspection or any doubt arise about its condition for safe use.
- 5 **TIME OF USAGE** - the horizontal lifeline can be used throughout five years, counting since the date of putting into operation indicated, at the IDENTITY CARD. The device have to be out of service and destroyed after five years of usage.
- 6 **STORAGE** - the horizontal lifeline AE 320 must be stored in a dry, ventilated, room temperature and free of sun places.
- 7 **CLEANING** - clean the horizontal lifeline AE 320 in a warm water and household soap. Do not use any acid or basic solvents. After cleaning the device AE 320 must be natural dry far away from any fire and heat.
- 8 **REPAIRS** - it is strictly forbidden to make any repairs and modifications to the horizontal lifeline AE 320 yourself.
- 9 **TRANSPORT** - the horizontal lifeline AE 320 must be transported in the package (for example: impregnated textile, foil bag or plastic, steel box) avoid moisture mechanical and chemical or others defects.

IT IS THE RESPONSIBILITY OF THE USER ORGANISATION TO PROVIDE THE IDENTITY CARD AND TO FILL IN THE DETAILS REQUIRED. THE IDENTITY CARD SHOULD BE FILLED IN ONLY BY A COMPETENT PERSON RESPONSIBLE FOR PROTECTIVE EQUIPMENT. THE IDENTITY CARD SHOULD BE FILLED IN BEFORE THE FIRST USE OF THE EQUIPMENT. ANY INFORMATION ABOUT THE EQUIPMENT LIKE: PERIODIC INSPECTIONS, REPAIRS, REASONS OF EQUIPMENT'S WITHDRAWN FROM USE SHALL BE NOTED. THE IDENTITY CARD SHOULD BE STORED DURING A WHOLE PERIOD OF EQUIPMENT UTILIZATION. DO NOT USE THE EQUIPMENT WITHOUT THE IDENTITY CARD.

IDENTITY CARD

MODEL AND TYPE OF EQUIPMENT					
REF. NUMBER					
SERIAL NUMBER		DATE OF MANUF.			
USER NAME					
DATE OF PURCHASE			DATE OF FIRST USE		
PERIODIC EXAMINATION AND REPAIR HISTORY					
	DATE	REASON FOR SERVICING/REPAIR	CONDITION OF DEVICE AFTER SERVICING	NAME AND SIGNATURE OF COMPETENT PERSON	NEXT EXAMINATION DATE
1					
2					
3					
4					
5					

Instruction Manual

CE 0082

ADJUSTABLE HORIZONTAL LIFELINE AE 320

Ref. AE 320 xx

EN 795:1996 CLASS B

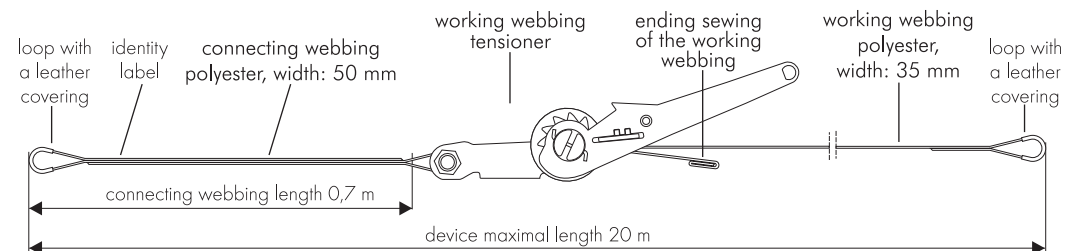
The adjustable horizontal lifeline AE 320 is a component of a personal fall arrest equipment. It should be used in situation when the worker has to move often in horizontal plane.

The adjustable horizontal lifeline AE 320 is a temporary anchor device type class B and is tested and complied with EN 795.

The adjustable horizontal lifeline AE 320 is the protection for a 1-3 persons.

BASIC EQUIPMENT

- Working Tape tensioner made of zinc plated steel and powder painted steel
- Working rope made of polyester tape 35 mm and of length 19 m
- Connecting rope made of polyester tape 50 mm of length 0,7 m



ATTENTION!

The adjustable horizontal lifeline AE 320 can be equipped only with certified (according to EN 362) snap hooks.

CONTENT OF THE DEVICE IDENTITY LABEL

name (type) of the device

reference number of the device*

identity number of the authorized body

suitable norm and class

* XX - length: (10 m or 20 m)

Adjustable Horizontal LIFELINE		number of the manufacturing series	
AE 320 XX		month/year of the device manufacture	
CE 0082	Serial number: 0000001	Date of manufacture: 11.2007	name of the manufacturer or distributor
EN 795:1996 CLASS B	WORKSafe®		
Read the instruction manual before use			

Maximum number of attached workers - 3.

For use with personal fall arrest systems according to EN 354/355; EN 354/353-2

Ground clearance and strength of structural anchor point according to instruction manual.

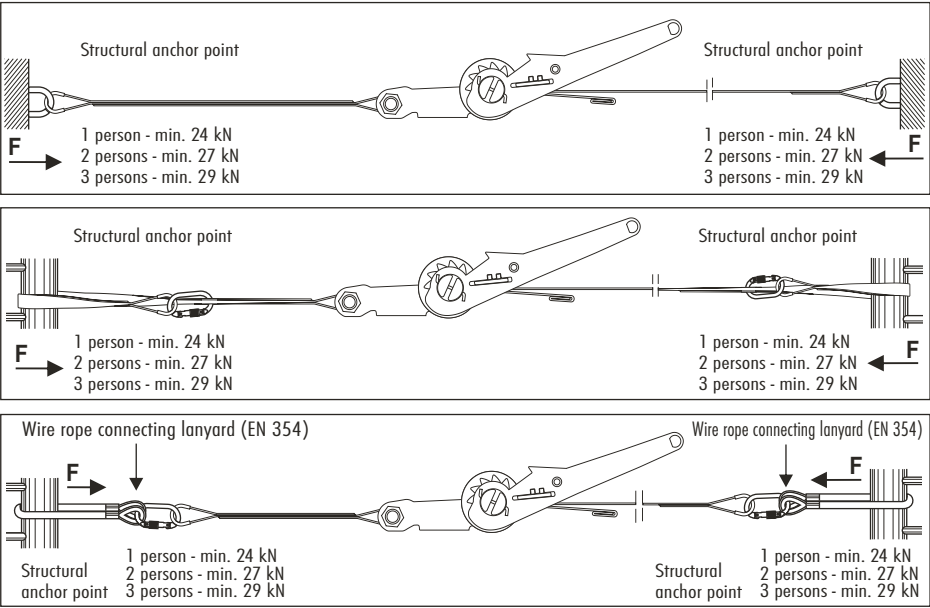


PDS International Pte Ltd
10 Pandan Crescent, #05-03/04 (LL2)
UE Tech Park ; Singapore 128466
Tel : +65 6776 6200 ; Fax : +65 6778 2400

EC type examination done by
APAVE LYONNAISE
69811 TASSIN
France - 0082

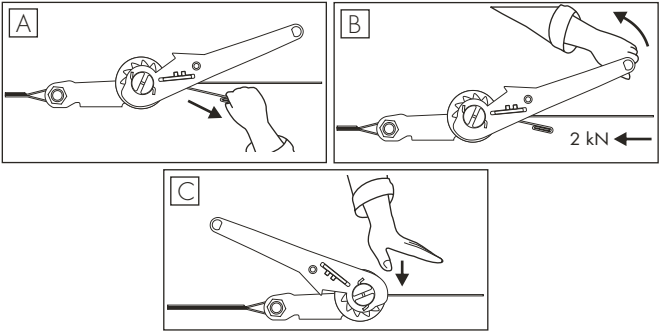
METHODS OF CONNECTING THE HORIZONTAL LIFELINE TO THE STRUCTURAL ANCHOR POINTS

- Attention!
- The shape of the structural anchor points should not let self-acting disconnection of the lifeline.
 - The structural anchor points have to be situated on the same level and have a minimal static resistance 24 kN, 27 kN, 29 kN.



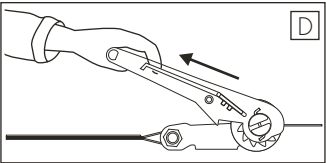
ADJUSTING THE LENGTH AND THE TENSION OF THE HORIZONTAL LIFELINE

- ☐ A Tension the working webbing by hand.
- ☐ B Tension the working webbing with handy force (0,5kN-1,5kN) by a lever in accordance with arrow, until cancel sag of the working webbing.
- ☐ C Check a closing of the rope tensioner release lever to avoid an accidental loosening of the lifeline.



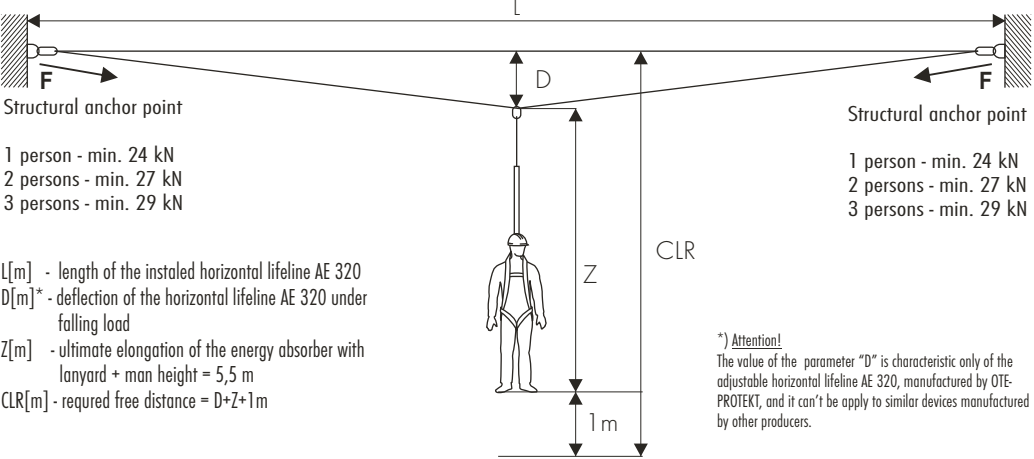
DISASSEMBLY OF THE HORIZONTAL LIFELINE

- ☐ D To disassembly the lifeline pull out the internal rod of the webbing tensioner and release lever by hand.



BASIC RULES OF USING THE ADJUSTABLE HORIZONTAL LIFELINE AE 320

- the horizontal lifeline must only be used by a persons previously trained for working at heights,
- the horizontal lifeline is intended for one, two or three persons,
- before each use, a close visual examination of the rope tensioner, snap hooks, ropes, splices, must be done in respect of mechanical, chemical and thermal defects. The examination must be done by a person who is going to use the horizontal lifeline. In the case of any defect or doubt of correct condition of the horizontal lifeline, do not use it.
- using the horizontal lifeline requires free distance below the rope level. This distance depends on the lifeline length. See drawing below.



Number of persons	L									
	5 m		7 m		10 m		15 m		20 m	
	D [m]	F [kN]	D [m]	F [kN]	D [m]	F [kN]	D [m]	F [kN]	D [m]	F [kN]
1	0,65	24,00	0,91	24,00	1,30	18,00	1,94	24,00	2,59	24,00
2	0,68	27,00	0,96	27,00	1,37	20,00	2,05	27,00	2,73	27,00
3	0,72	29,00	1,00	29,00	1,43	29,00	2,15	29,00	2,86	29,00

- the adjustable horizontal lifeline AE 320 should be tensioned between two structural points with handy force (0,5kN-1,5kN)
- when a calculated value of the CLR is higher than free distance at the particular working place we have to:
 - employ an energy absorber with lanyard with shorter entire length;
 - employ a permanent fall arrest system with rigid lifeline.
- using the horizontal lifeline, in connection with fall arrest system, must be compatible with manual instructions of the fall arrest systems and obligatory standards:
 - EN354 - for the safety lanyards;
 - EN355 - for the energy absorbers;
 - EN361 - for the safety harness;
 - EN362 - for the connectors.
- it is strictly forbidden using the horizontal lifeline in the explosion zone.
- during using the horizontal lifeline must be protected from a contact with oils, acids, solvents, basics, open fire, hot metal drops and sharp edges. We should avoid using the lifeline in the dust laden and greasy environment.
- the energy absorber with lanyard is the only fall arrest subassembly which can be used to connect the worker safety harness to the horizontal lifeline AE 320.
- it is strictly forbidden using any retractable type fall arresters or guided type fall arresters instead of the energy absorber with lanyard.
- it is strictly forbidden making any modifications to the horizontal lifeline by yourself.